



Shar Dell, Boxley Road

Chatham

Offers Over £800,000



Shar Dell

Boxley Road, Chatham

Exceptional 5-bed family home in sought-after location. Modern features inc. en-suites, skylight kitchen, log burner lounge, utility, double garage, and eco-friendly solar panels. Ample outdoor space for entertaining, with serene landscaped gardens. Ideal blend of convenience and tranquillity.

Council Tax band: G

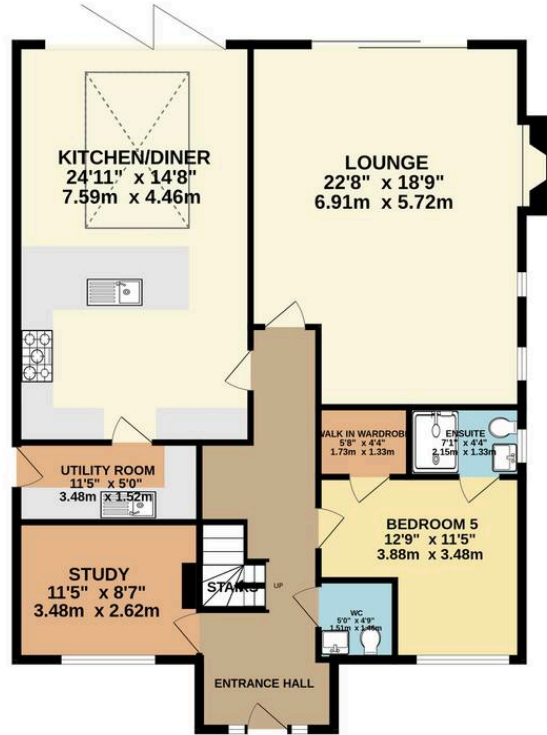
Tenure: Freehold

- Five Bedroom Detached Family Home
- Two En-Suites, Family Bathroom & Downstairs Cloakroom/Wc
- Modern Fitted Kitchen/Dining Room With Skylight & Bi Folding Doors
- Spacious Lounge With Cosy Log Burner
- Utility Room With Side Access Into Garden
- Double Garage With Solar Panels
- Bloc Paved Driveway Providing Parking For Multiple Vehicles
- Large Plot In a Sought After Location
- Close Proximity To Local Amenities & Motorway Connections
- Early Viewing Advised!

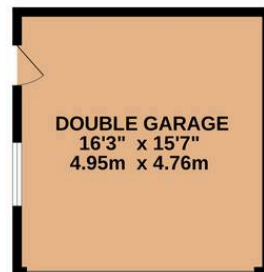




GROUND FLOOR
1504 sq.ft. (139.7 sq.m.) approx.



1ST FLOOR
867 sq.ft. (80.6 sq.m.) approx.



TOTAL FLOOR AREA : 2371 sq.ft. (220.3 sq.m.) approx.

Whilst every attempt has been made to ensure the accuracy of the floorplan contained here, measurements of doors, windows, rooms and any other items are approximate and no responsibility is taken for any error, omission or mis-statement. This plan is for illustrative purposes only and should be used as such by any prospective purchaser. The services, systems and appliances shown have not been tested and no guarantee as to their operability or efficiency can be given.





Freeman & Gray

Office 15-16 Fort Bridgewood, Rochester - ME1 3DQ

01634 310339

info@freemanandgray.com

www.freemanandgray.com/

