



40 Catkin Close, Chatham

Chatham

In Excess of £400,000



## 40 Catkin Close

Chatham, Chatham

Nestled in a highly sought-after location, this charming 3-bedroom detached house offers comfortable family living, a must see.

Council Tax band: D

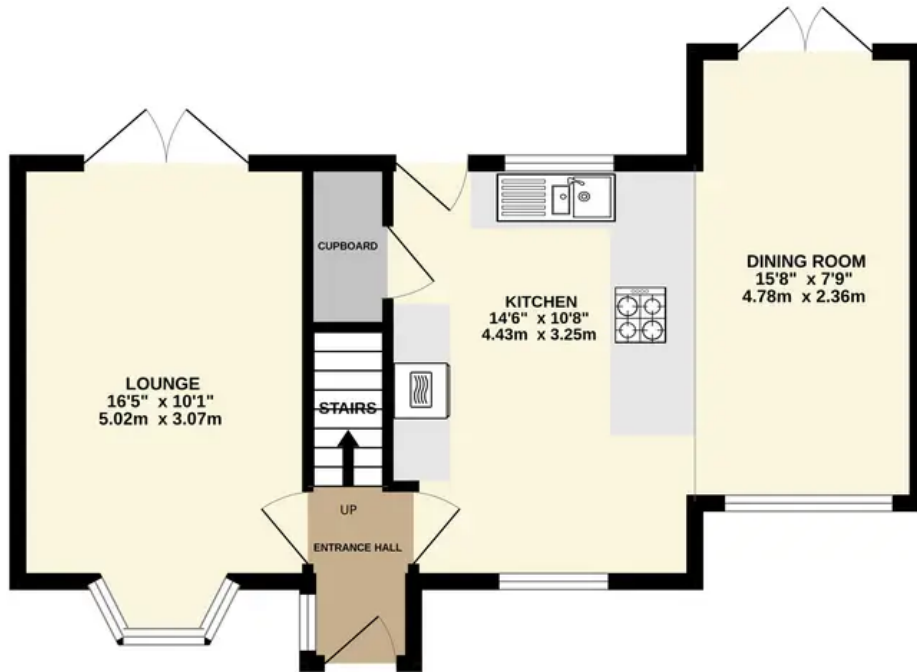
Tenure: Freehold

- Potential to extend subject to planning permission
- 3 Bed Detached House
- Desirable Location
- 2 Reception Rooms
- School Catchment
- Cul De Sac Location
- Well Presented Throughout
- Easy Access To Nearby M2 Motorway
- Attractive Family Home

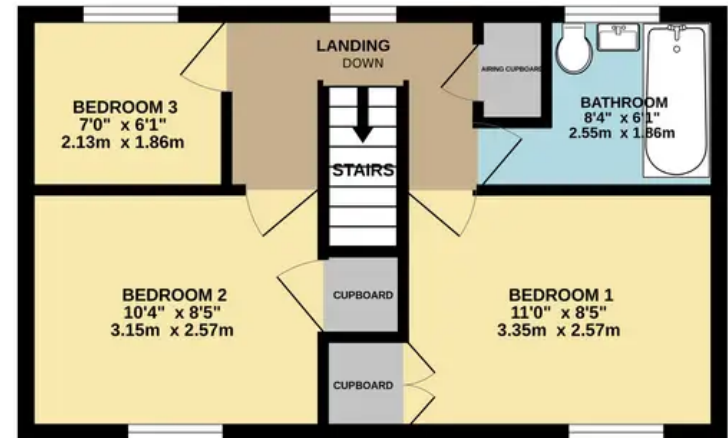




GROUND FLOOR  
482 sq.ft. (44.7 sq.m.) approx.



1ST FLOOR  
350 sq.ft. (32.5 sq.m.) approx.



TOTAL FLOOR AREA : 832 sq.ft. (77.3 sq.m.) approx.

Whilst every attempt has been made to ensure the accuracy of the floorplan contained here, measurements of doors, windows, rooms and any other items are approximate and no responsibility is taken for any error, omission or mis-statement. This plan is for illustrative purposes only and should be used as such by any prospective purchaser. The services, systems and appliances shown have not been tested and no guarantee as to their operability or efficiency can be given.

Made with Metropix ©2024





## Freeman & Gray

Office 15-16 Fort Bridgewood, Rochester - ME1 3DQ

01634 310339

[info@freemanandgray.com](mailto:info@freemanandgray.com)

[www.freemanandgray.com/](http://www.freemanandgray.com/)

